

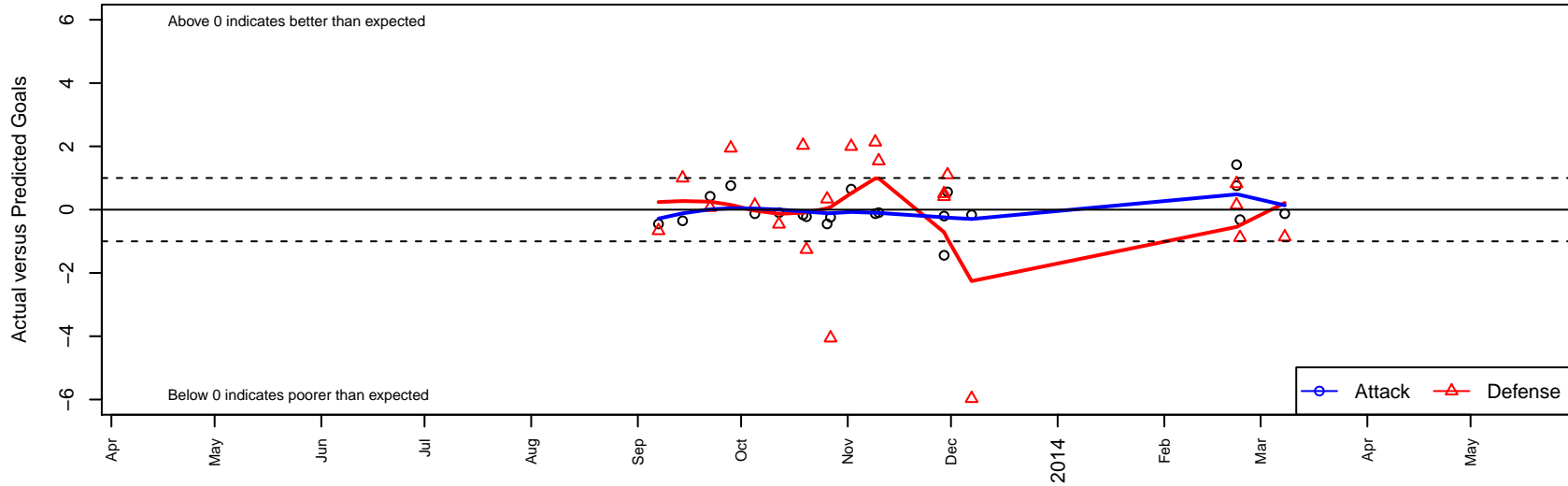
Anaheim Surf B00

, CAS
 B00 total strength=1085
 attack=1.98 defense=3.64
 fall league = SCDL FI1 U13
 alt names used:
 Anaheim Surf B13
 ANAHEIM SURF BU13 (CAS)

Venues played:
 SCDL FI1 U13
 Surf Thanksgiving Gold U13
 SoCal National Cup B00



Anaheim Surf B00
 Dots are actual minus expected GF (blue circles) and GA (red triangles).
 Blue line is smoothed change in attack strength. Red is smoothed change in defense strength.



| | date | home | | away | | venue | pred.home | pred.away |
|-------|-------------|-------------------------------|----|---------------------------------|---|----------------------------|------------------|------------------|
| 24000 | 2014-03-08 | Strikers FC Irvine B00 | 3 | Anaheim Surf B00 | 0 | SoCal National Cup B00 | 2.135 | 0.126 |
| 23272 | 2014-02-23 | Anaheim Surf B00 | 0 | Celtic Harps B00 | 3 | SoCal National Cup B00 | 0.316 | 2.118 |
| 23019 | 2014-02-22 | Anaheim Surf B00 | 1 | LA Galaxy South Bay Gold B00 | 1 | SoCal National Cup B00 | 0.244 | 1.820 |
| 23033 | 2014-02-22 | Nomads SC B00 | 2 | Anaheim Surf B00 | 2 | SoCal National Cup B00 | 2.146 | 0.577 |
| 20613 | 2013-12-07 | San Diego SC Academy Navy B00 | 10 | Anaheim Surf B00 | 0 | SCDL FI1 U13 | 4.030 | 0.165 |
| 20096 | 2013-11-30 | De Anza Force SC Blue B00 | 0 | Anaheim Surf B00 | 1 | Surf Thanksgiving Gold U13 | 1.101 | 0.441 |
| 19633 | 2013-11-29 | Crusaders CSC Red B00 | 0 | Anaheim Surf B00 | 0 | Surf Thanksgiving Gold U13 | 0.504 | 1.442 |
| 19635 | 2013-11-29 | Davis Legacy 01 B00 | 2 | Anaheim Surf B00 | 0 | Surf Thanksgiving Gold U13 | 2.412 | 0.203 |
| 18077 | 2013-11-10 | Pateadores Pre-Academy B00 | 2 | Anaheim Surf B00 | 0 | SCDL FI1 U13 | 3.540 | 0.094 |
| 17805 | 2013-11-09 | Strikers FC Irvine B00 | 0 | Anaheim Surf B00 | 0 | SCDL FI1 U13 | 2.135 | 0.126 |
| 16856 | 2013-11-02 | West Coast FC B00 | 1 | Anaheim Surf B00 | 1 | SCDL FI1 U13 | 2.997 | 0.352 |
| 16257 | 2013-10-27 | Notts Forest Academy B00 | 7 | Anaheim Surf B00 | 0 | SCDL FI1 U13 | 2.942 | 0.239 |
| 15977 | 2013-10-26 | Newport Mesa SC Waves B00 | 1 | Anaheim Surf B00 | 0 | SCDL FI1 U13 | 1.334 | 0.450 |
| 15361 | 2013-10-20 | Anaheim Surf B00 | 0 | San Diego Surf SC Academy I B00 | 5 | SCDL FI1 U13 | 0.222 | 3.741 |
| 15043 | 2013-10-19 | Anaheim Surf B00 | 0 | San Diego SC Academy Navy B00 | 2 | SCDL FI1 U13 | 0.165 | 4.030 |
| 13993 | 2013-10-12 | Anaheim Surf B00 | 0 | Pateadores Pre-Academy B00 | 4 | SCDL FI1 U13 | 0.094 | 3.540 |
| 12977 | 2013-10-05 | Anaheim Surf B00 | 0 | Strikers FC Irvine B00 | 2 | SCDL FI1 U13 | 0.126 | 2.135 |
| 12029 | 2013-09-28 | Anaheim Surf B00 | 1 | Notts Forest Academy B00 | 1 | SCDL FI1 U13 | 0.239 | 2.942 |
| 11434 | 2013-09-22 | United FC White B00 | 1 | Anaheim Surf B00 | 1 | SCDL FI1 U13 | 1.067 | 0.578 |
| 10112 | 2013-09-14 | Anaheim Surf B00 | 0 | West Coast FC B00 | 2 | SCDL FI1 U13 | 0.352 | 2.997 |
| 9162 | 2013-09-07 | Anaheim Surf B00 | 0 | Newport Mesa SC Waves B00 | 2 | SCDL FI1 U13 | 0.450 | 1.334 |